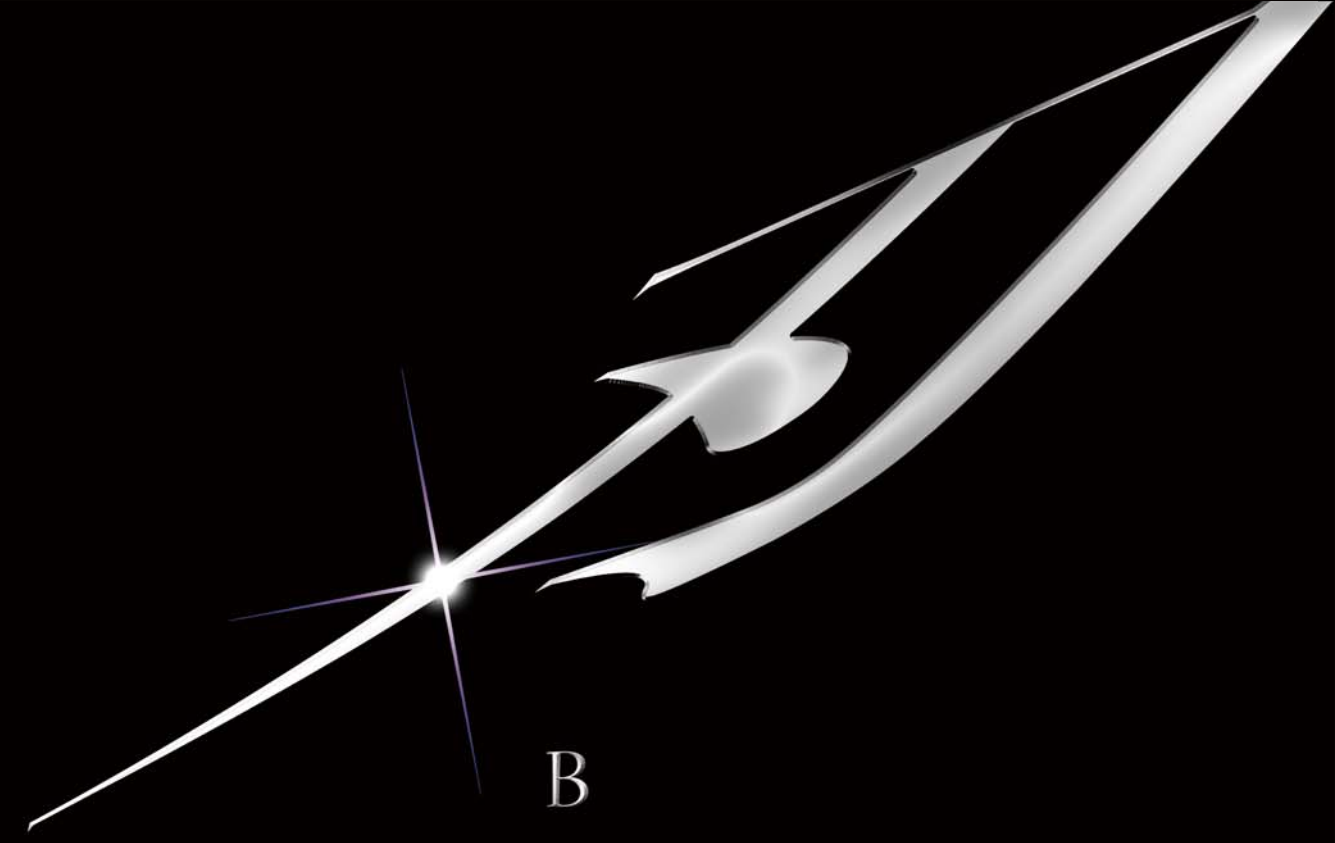


High Quality Tipped Saw Blade  
 **IWASAW**<sup>®</sup>  
[www.iwasaw.com](http://www.iwasaw.com)

I502



B  
L  
A  
D  
E



  
High Quality Tipped Saw Blade  
**IWASAW**<sup>®</sup>

## Corporate Profile

Company Name IWATA SAW MFG CO., LTD  
 Head Office Location 1262 Toyohamanakano, Iwata, Shizuoka Pref., 437-1201 Japan  
 Tel. +81-538-55-6711  
 Fax. +81-538-58-2535  
 e-mail : info@iwasaw.com  
 President Hiromichi Anzai  
 Foundation September, 1973



## Factory

Main Factory : 1262 Toyohamanakano, Iwata, Shizuoka Pref., 437-1201 Japan  
 Tel. +81-538-55-6711  
 Fax. +81-538-58-2535  
 e-mail : info@iwasaw.com  
 Kamata Factory : 2288 Kamata, Iwata, Shizuoka Pref., 438-0038 Japan  
 Tel. +81-538-32-9822  
 Fax. +81-538-34-8581

## Contact

Hiromichi Anzai / President [hiro@iwasaw.com](mailto:hiro@iwasaw.com)  
 Masayuki Sakamoto / Sales [m.sakamoto@iwasaw.com](mailto:m.sakamoto@iwasaw.com)  
 Kuniaki Ansai / Sales [kuniaki@iwasaw.com](mailto:kuniaki@iwasaw.com)

Company e-mail [info@iwasaw.com](mailto:info@iwasaw.com)  
 Website [www.iwasaw.com](http://www.iwasaw.com)



High Quality Tipped Saw Blade



## Fiber Cement Cut Blade PCD

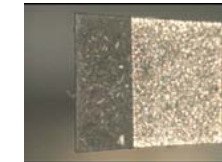


Poly-Crystalline Diamond



### PCD Saw Blade

Dia.(")	Dia.(mm)	Teeth	Arbor	Kerf	Grind
4"	100	5	20mm	1.8	SG
5"	127	4	5/8"	1.8	SG
6 1/3"	160	4	20mm	2.2	SG
6 1/3"	160	8	20mm	2.2	SG
7"	180	8	30mm	2.2	SG
7 1/4"	184	4	5/8"/Diamond	2.2	SG
7 1/2"	190	6	20mm	2.2	SG
9"	230	6	1"	2.2	SG
10"	254	6	5/8"	2.2	SG
12"	305	8	1"	2.6	SG

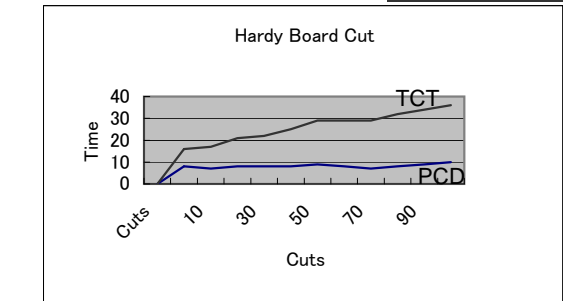


●New Blade



●After 200 cut

\* 6pcs Hardy Board cut together 1.89"thick x 9.13"length  
 Total life is more than 20 to 30 times of TCT blades.



## Fiber Cement Cut Blade TCT



Dia.(")	Dia.(mm)	Teeth	Arbor	Kerf	Grind
4"	100	30	20mm	1.2	ATB
5"	125	36	20mm	1.2	ATB
5"	127	6	5/8"	1.8	ATB
7"	180	32	1"	1.8	ATB
7"	180	36	1"	1.8	ATB
7 1/4"	184	6	5/8"/Diamond	1.8	ATB
7 1/4"	184	6	20mm	1.8	ATB
10"	254	8	5/8"	2.4	ATB
12"	305	8	1"	2.6	ATB

High Quality Tipped Saw Blade



## Aluminum Cut Blade for Industrial Market



### Aluminum Profile

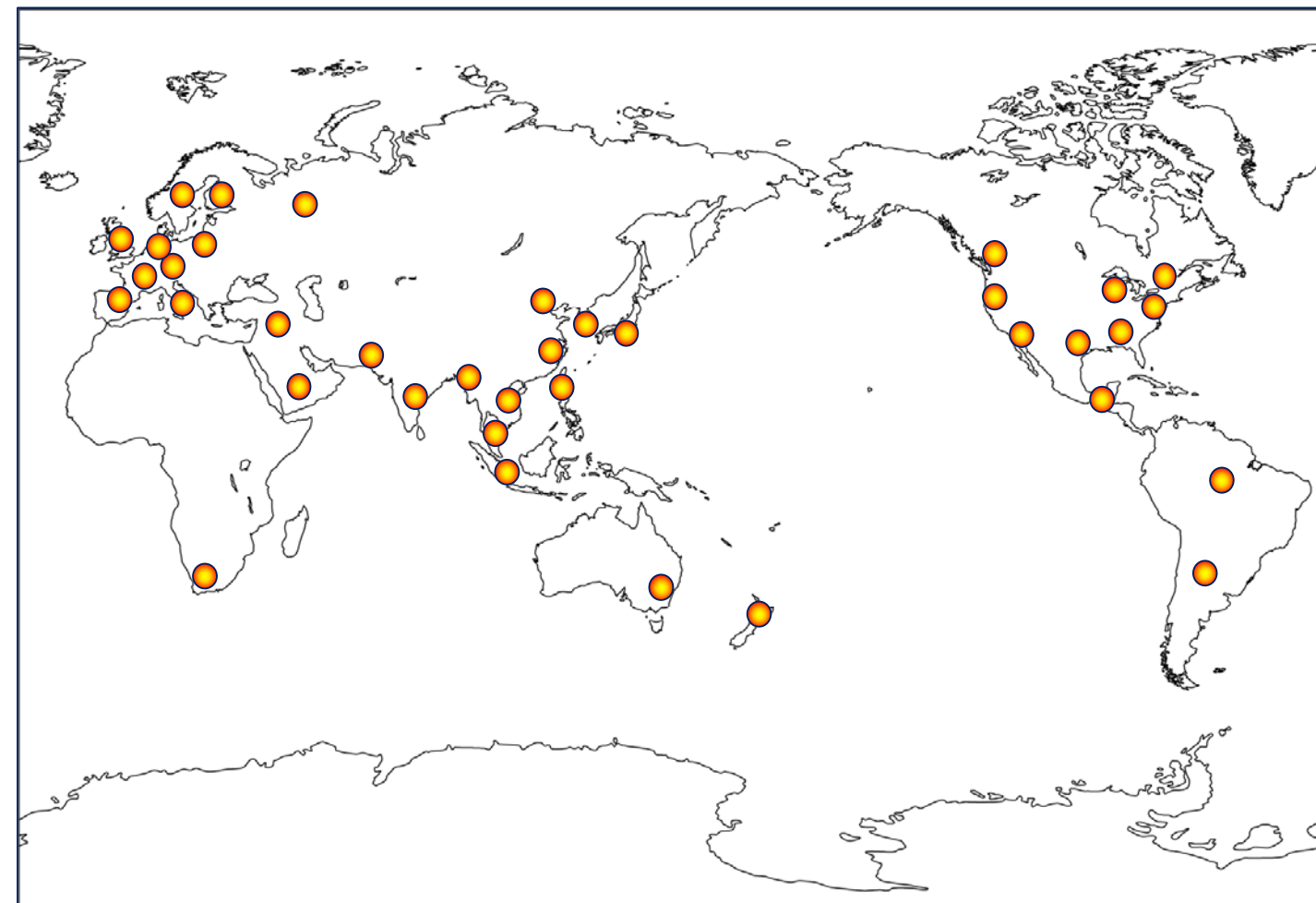
Dia. (")	Dia. (mm)	Teeth	Arbor	Kerf	Grind
8"	205	80	1"	2.5	BC
10"	255	80	1"	2.5	TCG
10"	255	80	1"	2.8	BC
12"	305	100	1"	2.5	TCG
12"	305	100	1"	3.0	BC
14"	355	100	1"	2.5	TCG
14"	355	100	1"	3.0	BC
15"	380	100	1"	2.5	TCG
15"	380	100	1"	3.0	BA
16"	405	100	1"	2.5	TCG
16"	405	120	1"	3.0	BC
16"	405	120	1"	3.2	BC
18"	455	120	1"	3.0	TCG
18"	455	120	1"	3.5	BC
20"	510	120	40mm	3.5	TCG
20"	510	120	1"	3.5	BC
24"	610	120	1"	4.0	TCG
24"	610	120	1"	4.0	BC

### Aluminum Bar

Dia. (")	Dia. (mm)	Teeth	Arbor	Kerf	Grind
14"	355	50	40mm	2.0	TCG
18"	450	96	32mm	3.0	TCG
19"	480	50	40mm	2.7	TCG
19"	480	60	40mm	2.7	TCG
20"	500	96	30mm	3.0	TCG
20"	500	96	1"	3.0	TCG
22"	550	96	30mm	3.0	TCG
24"	600	96	30mm	3.0	TCG

### Aluminum for Automobile Industry

Dia. (")	Dia. (mm)	Teeth	Arbor	Kerf	Grind
18"	455	60	1"	3.5	BC
18"	455	60	30mm	4.5	TCG



Against the background of the ever disappearing national boundaries in the modern business world, There is now a world wide expectation that high level technologies be used in the cutting processes are a common denominator throughout all processing industries.

After established in 1973, IWASAW first went into timber processing on a national market and from 1982 expanded out into the international market in South East Asia, the Middle and Near East.

Three years later in 1985, this growth was further increased to include North America and Europe.

We are continuing to open out into other fields of business and are currently engaging in global expansion orientated development.

## Plastic Cut Blade for Industrial Market



### Sheet and Plate (polyvinyl chloride, acrylic)

Dia. (")	Dia. (mm)	Teeth	Arbor	Kerf	Grind
6 7/8"	175	70	1"	1.6	BC
7"	180	80	5/8"	1.5	BC
8"	205	80	1"	2.0	BC
8"	205	100	1"	2.0	BC
9"	230	100	1"	2.0	BC
10"	255	100	1"	2.0	BC
10"	255	100	1"	2.5	BA
10"	255	120	1"	2.0	BC
12"	305	100	1"	2.0	BC
12"	305	100	1"	3.0	BC
14"	355	100	1"	3.0	BC
14"	355	120	1"	3.2	BC

High Quality Tipped Saw Blade



High Quality Tipped Saw Blade



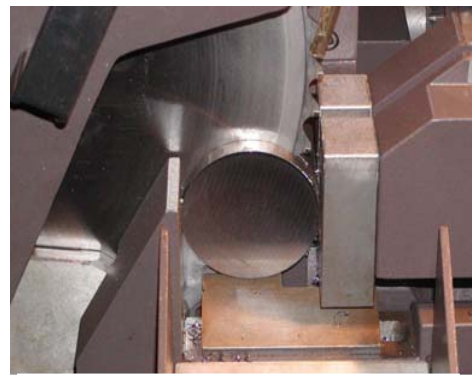
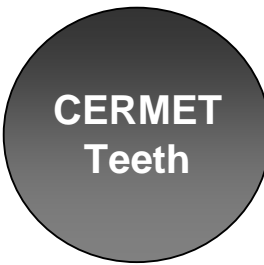
## Throw Away Blade & Cold Saw Blade



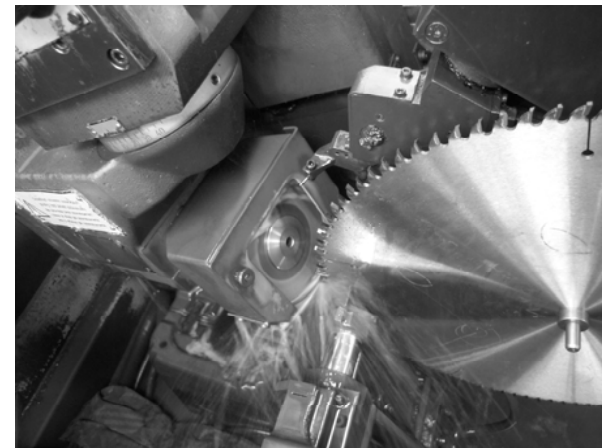
Dia.(mm)	Kerf	Plate	bore	Teeth
250	2.0	1.70	32mm	60
250	2.0	1.70	32mm	72
250	2.0	1.70	32mm	80
250	2.0	1.70	32mm	100
285	2.0	1.70	32/40mm	60
285	2.0	1.70	32/40mm	72
285	2.0	1.70	32/40mm	80
285	2.0	1.70	32/40mm	100
285	2.0	1.70	32/40mm	120
315	2.3	2.00	32mm	60
315	2.3	2.00	32mm	72
315	2.3	2.00	32mm	80
315	2.3	2.00	32mm	100
360	2.6	2.25	40/50mm	60
360	2.6	2.25	40/50mm	80
360	2.6	2.25	40/50mm	100
425	2.7	2.25	50mm	60
425	2.7	2.25	50mm	80
425	2.7	2.25	50mm	100
460	2.7	2.25	50mm	72
460	2.7	2.25	50mm	80
460	2.7	2.25	50mm	100
580	3.2	2.50	80mm	60
580	3.2	2.70	80mm	80
580	3.2	2.70	80mm	100

\* Mist oil is needed.

\* Low RPM only. RPM70 to RPM150.



## Wood Cut Blade for Industrial Market



### Finish Cutting of All Types of General Wood

Dia.(")	Dia.(mm)	Teeth	Arbor	Kerf	Grind
5 8/9"	150	40	1"	3.0	BA
8"	205	60	1"	3.0	BA
10"	255	100	1"	2.4	BA
10"	255	100	1"	2.8	BA
10"	255	80	1"	3.0	BA
10"	255	100	1"	3.0	BA
12"	305	100	1"	2.8	BA
12"	305	120	1"	2.8	BA
12"	305	100	31.75mm	3.0	BA
12"	305	100	1"	3.0	BA
14"	355	100	1"	3.0	BA
14"	355	120	1"	3.0	BA
15"	380	100	1"	2.4	BA
16"	405	100	1"	3.2	BA
16"	405	120	1"	3.2	BA
18"	455	100	1"	3.2	BA
18"	455	120	1"	3.2	BA
20"	510	100	1"	3.4	BA
20"	510	120	1"	3.4	BA
22"	560	100	1"	3.4	BA
24"	610	100	1"	3.4	BA
24"	610	120	1"	3.6	BA

### Gang Rip Slating Saw Blade

Dia.(")	Dia.(mm)	Teeth	Arbor	Kerf	Grind
10 3/5"	270	35	70mm	2.2	BA

### Sawing Wood , Ripping

Dia.(")	Dia.(mm)	Teeth	Arbor	Kerf	Grind
7 1/4"	185	30	40mm	1.8	BA
8"	203	30	40mm	1.8	BA
10"	255	50	1"	1.8	BA
10"	255	40	1"	3.0	BA
10"	255	40	75mm	3.0	BA
10 3/5"	270	40	60mm	3.0	BA
10 3/5"	270	40	75mm	3.0	BA
12"	305	60	1"	2.8	BA
12"	305	40	1"	3.0	BA
12"	305	40	75mm	4.0	BA
12"	305	60	1"	3.0	BA
14"	355	60	1"	3.0	BA
14"	355	60	1"	3.2	BA
16"	405	60	1"	3.4	BA
16"	455	60	1"	3.2	BA

### High-Speed Cutting of Plywood

Dia.(")	Dia.(mm)	Teeth	Arbor	Kerf	Grind
12"	305	100	65mm	3.2	C
12"	305	120	65mm	3.2	C

### Twin Saws

Dia.(")	Dia.(mm)	Teeth	Arbor	Kerf	Grind
26"	660	48	40mm	5.0	B
30"	760	36	50mm	6.0	B

## Car Window Frame Cut Blade



Dia.(mm)	Kerf	Plate	bore	Teeth
255	1.8	1.5	25.4	100
255	2.0	1.5	25.4	100



High Quality Tipped Saw Blade



High Quality Tipped Saw Blade



## Dry Cut Blade for Stainless



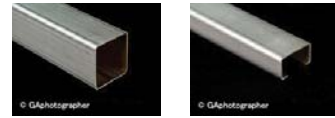
### Standard Stainless Steel Cutting Blade

Dia.(")	Dia.(mm)	Teeth	Arbor	Kerf	Grind
5 1/2"	140	46	62mm	1.8	MTCG
7"	180	48	20mm	1.8	TCG
9"	230	60	1"	1.8	TCG
12"	305	80	1"	2.2	TCG
14"	355	90	1"	2.4	TCG

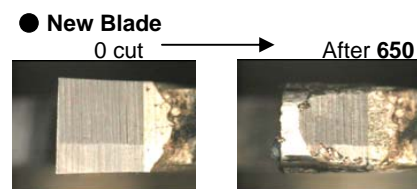
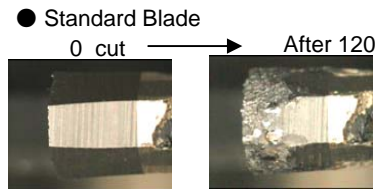
### Upgrade Stainless Steel Cutting Blade

Dia.(")	Dia.(mm)	Teeth	Arbor	Kerf	Grind
5 1/2"	140	46	62mm	1.8	MTCG
7"	180	60	20mm	1.8	ATB
9"	230	50	1"	1.9	ATB
9"	230	60	1"	1.8	ATB
10"	254	70	1"	2.0	MTCG
12"	305	80	1"	2.0	MTCG
14"	355	90	1"	2.2	MTCG

\*DO NOT use them on disk grinder.  
\*Use them on Low RPM saw.



● SUS 304 30mmx2.0mm stainless pipe cut test



Upgrade stainless blade makes clean cut and longer life.  
Life is 5 times as much as standard blade in internal test.  
Much more Economical than the other!!

## Dry Cut Blade for Aluminum



Dia.(")	Dia.(mm)	Teeth	Arbor	Kerf	Grind
4"	100	40	20mm	2.0	TCG
4 1/3"	110	36	20mm	1.6	ATB
5"	125	40	20mm	1.8	ATB
6 1/3"	160	50	20mm	2.0	ATB
6 1/2"	165	60	5/8"	1.9	TCG
6 7/8"	174	52	20mm	1.8	TCG
7"	180	54	20mm	2.0	ATB or TCG
7 1/4"	184	48	5/8"/Diamond	2.0	ATB
8"	203	60	5/8"	1.8 or 2.1	TCG
8 1/2"	216	100	1"	2.2	ATB
9"	230	80	1"	2.4	TCG
10"	254	80,100,120	1"	2.4	ATB
10"	254	80	5/8"	2.6	TCG
10"	254	100,120	1"	3.2	TCG
12"	305	100,120	1"	2.8	ATB
12"	305	100	1"	3.0	TCG
12"	305	120	1"	3.2	TCG
14"	355	80	1"	2.4	ATB
14"	355	100,120	1"	2.8	ATB

## Off Line Tube Cutter



### Stationary Tube Cut Blade

Dia.(mm)	Kerf	Plate	bore	Teeth
250	2.0	1.70	32mm	120
285	2.0	1.70	32/40mm	120
285	2.0	1.70	32/40mm	140
315	2.5	2.25	50	90/108/120
335	2.5	2.25	50	90/108/120
350	2.5-2.7	2.25	32/50mm	100/120/144/160
370	2.6	2.25	32/50mm	100/120/144/160
420	2.7	2.25	50	70/90

Machine : Rattunde, Sinico, SOCO, Bewo, Conni, RSA etc..

## On Line Tube Cutter



### Flying Cut Saw blade

Dia.(mm)	Kerf	Plate	bore	Teeth
400	3.0	2.50	50	120/144
450	3.0	2.50	50	110/144/160/180
450	3.5	3.00	50	110/144
500	3.4	3.00	50	144/160
520	2.7	2.30	80	250
525	3.6	3.20	50	144
550	3.8	3.20	140	144
550	3.6	3.20	90/140mm	160
560	3.6	3.00	140	130/144/160/170
600	3.6	3.20	50/140mm	160/180
600	3.6	3.00	140	180

Machine : MTM, OtoMills, Dreistern etc..

### Orbital Cut Saw Blade

Dia.(mm)	Kerf	Plate	bore	Teeth
315	3.6	3.20	50	56/72/90
330	4.5	3.00	50	48/56/72
340	4.1	3.00	80	50/60/72
350	4.3	3.30	50	48/64
355	3.2	2.50	45	60/64
355	3.2	2.30	45	72/80
355	2.6	2.20	45	90/100
380	3.8	3.10	115	66/72/84
400	3.7	3.00	80	80/100

Machine : OtoMills, SMS Meer, Linsinger, Nakata, FDM, Sumitomo Heavy Industry, Kusakabe etc..

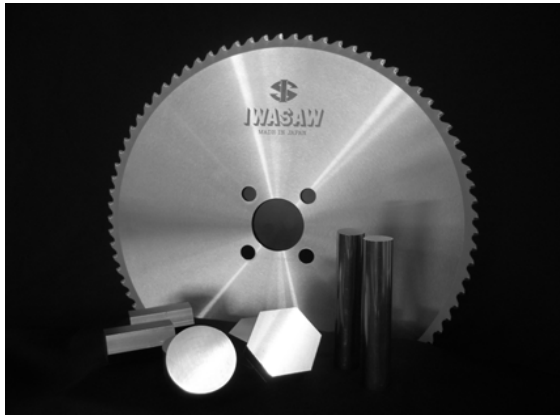
High Quality Tipped Saw Blade



High Quality Tipped Saw Blade



# Full Automatic Cut-off Machine



TSUNE



MEGA



LIX



NISHIJIMA

		Machine / Model	Pin Holes
Japan	Noritake	NCS-5/50	4/11/63
		NCS-2A/70	4/11/80
		NCS-2A/100	4/11/90
		NCS-2/150	4/11/90
	Tsune	TK5C-50GL	4/11/63
		TK5C-72GL	4/11/63
		TK5C-102GL	4/14/80
	Nishijima	NHC-050NA	4/11/63
		NHC-070NA	4/11/63
		NHC-100NA	4/16/80
		NHC-150NA	4/21/90
		NHC-180NA	4/21/120
	Amada	CM-65AN	4/11/80
		CM-75CNC	4/11/80
		CM-100AN	4/11/90
CM-100CNC		4/11/90	
CM-150AN		4/11/90	
Germany	Kasto	WAC7	4/9/50
		SPEED C9	4/9/50
		SPEED C14	4/14/80
		VARIO/SPEED C14	4/14/80
	Behringer -Eisele	HCS70/HCS90	2/15/80
		HCS90/HCS130	2/15/80
		VARIO/SPEED C14	2/15/80
	Kaltenbach I.T.E.C	KMR-100AP	4/15/80
		DC-65	4/9/50
	Taiwan	Mega	CS-65
CS-100			4/11/90
CS-150			4/11/90
Fong Ho		TAC-70NCA	4/11/63
		TAC-70NCB	4/11/63
		TAC-130NCA	4/11/90
		TAC-130NCB	4/14/80
Everising		P-65A	4/11/63
		P-100A	4/11/90
		P-150A	4/13/90
Kentai	KTC-65	4/11/63	
	KTC-85	4/11/63	
China	Lix	LYJ-50CNC	4/11/63
		LYJ-70CNC	4/11/63
		LYJ-90CNC	4/11/63
		LYJ-130CNC	4/11/90
		LYJ-150CNC	4/11/90

# Dry Cut Blade for Steel



\*DO NOT use them on disk grinder.  
\*Use them on Low RPM saw.

## Standard

Dia. (")	Dia. (mm)	Teeth	Arbor	Kerf	Grind
110	110	28	20mm	1.6	MTCG
5 3/8"	136	30	20mm	1.5	MTCG
6 1/2"	165	48	5/8"	1.6	MTCG
6 7/8"	174	36	20mm	1.7	MTCG
7"	180	36	20mm	2.0	TCG
7"	180	38	20mm	2.0	TCG
7 1/4"	184	38	20mm	2.0	TCG
7 1/4"	184	48	5/8"	2.0	TCG
8"	203	40	5/8" or 20mm	2.0	TCG
8"	203	42	5/8"	1.9	MTCG
8"	203	50	5/8"	1.9	MTCG
9"	230	48	1"	2.0	TCG
10"	254	52	1"	2.0	TCG
12"	305	60	1"	2.2	TCG
14"	355	66	1"	2.4	TCG
14"	355	72	1"	2.4	TCG
14"	355	72	1"	2.2	MTCG
14"	355	80	1"	2.4	TCG

## Thin Steel

Dia. (")	Dia. (mm)	Teeth	Arbor	Kerf	Grind
7"	180	68	20mm	1.6	ATB
7 1/4"	184	68	5/8"	1.6	ATB
8"	203	68	5/8"	1.8	ATB
12"	305	80	1"	2.2	MTCG
14"	355	90	1"	2.4	MTCG

# Dry Cut Blade for Steel CERMET Teeth



Dia. (")	Dia. (mm)	Teeth	Arbor	Kerf	Grind
7"	180	36	20mm	1.8	MTCG
7 1/4"	184	36	5/8"	1.8	MTCG
8"	203	42	5/8" or 20mm	1.8	MTCG
9"	230	48	1"	1.8	MTCG
12"	305	54	1"	2.2	MTCG
14"	355	66	1"	2.2	MTCG
14"	355	72	1"	2.2	MTCG

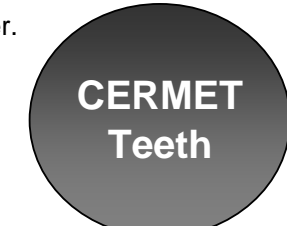
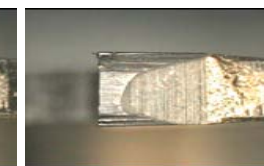
\*DO NOT use them on disk grinder.  
\*Use them on Low RPM saw.

● 914mmx6mm Mild steel plate cutting test

● New Blade

0 cut

After 40 cut



Cermet blade makes steel & Stainless cut all in once.  
**Life is more than Double of the standard blade.**  
Much more Economical than the other.

High Quality Tipped Saw Blade



High Quality Tipped Saw Blade

